



**XILO**  
height 1744 mm, length 606 mm. Black finish (cod. 10).



**Technical features:**

- steel towel warmer radiator
- horizontal elements featuring rectangular tubes 50x10 mm diameter
- side manifolds with a 30 mm round section
- manifold threading 1/2" Gas right
- maximum working pressure 4 bar
- maximum working temperature 95°C

**Price included:**

- 2 CHELA wall brackets
- 1/2" air vent

**Special options and surcharges:**

Radiators can be supplied with no. 1 1/2" coupling welded laterally for the connection to a single-pipe system and no. 2 1/2" couplings welded laterally to a manifold (Cod. B10).

Surcharge for two 1/2" couplings welded to a lateral manifold and an internal diaphragm (**Cod. B10**)

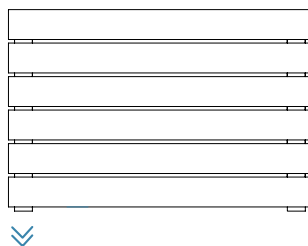
**CAUTION:** when this latter special working is present, correct operation is possible only when the lower outlet coupling is in axial alignment with the lowest pipe. Whenever this coupling is higher, all the pipes below will remain cold because they are not involved in the flow of water.

Prearrangement for monotube valve (**Cod. B14, B15**)

Finishes available	Surcharge
Standard White	
Classic finished	
Special finished	
Other RAL colors	

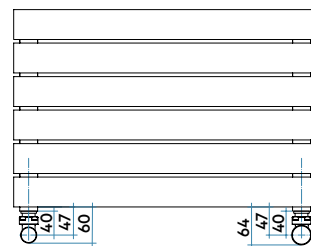
Finishing codes see page 596.

**Connections**

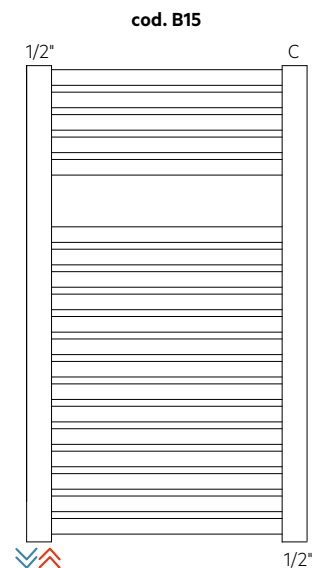
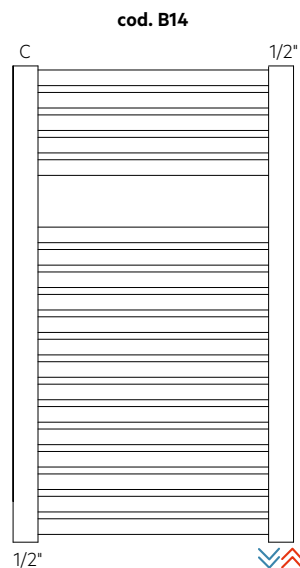
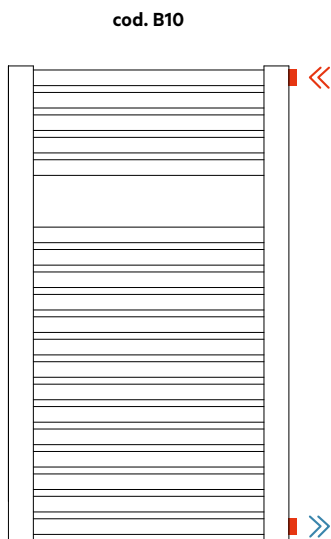


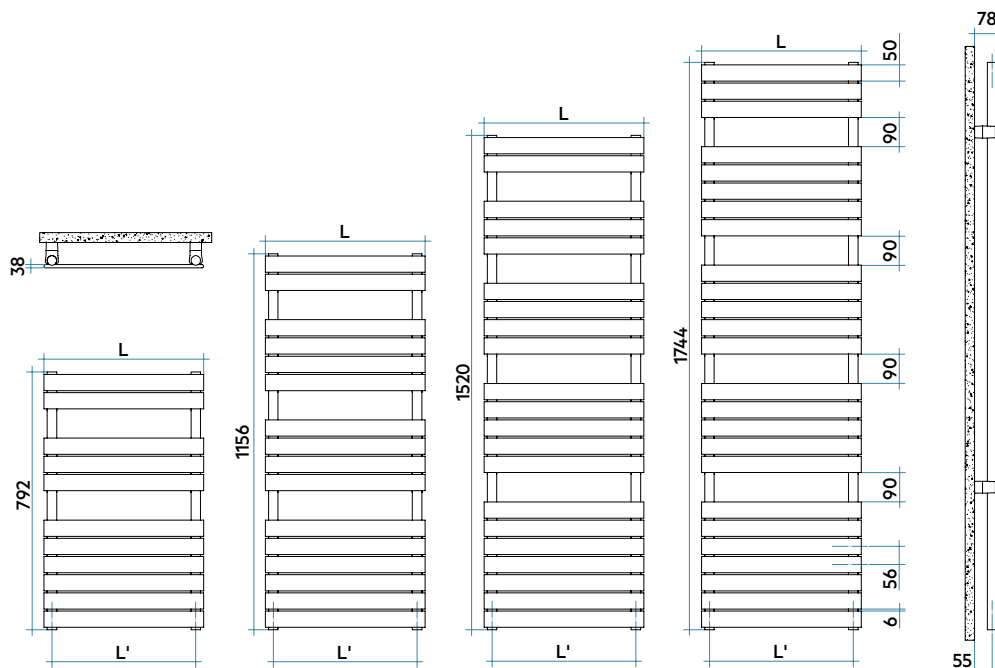
Laterals

**Connection dimensions with IRSAP valves**



For other types of connections see pag. 414





Model	Code	Depth	Height	Width	Conn.			Thermal Power				Exp.	
					centre	Weight	Cap.	Δt=50°C	Δt=40°C	Δt=30°C	Δt=20°C		
		mm	mm	mm	mm	Kg	lt	Btu/h	Watt	Watt	Watt (*)	Watt	n.
792 11 rails 2 espaces	XOP045 B 01 IR 01 NNN	38	792	456	406	6,4	2,7	1286	<b>377</b>	288	<b>204</b>	126	1,200
	XOP050 B 01 IR 01 NNN	38	792	506	456	7,0	2,9	1406	<b>412</b>	315	<b>223</b>	137	1,199
	XOP055 B 01 IR 01 NNN	38	792	556	506	7,5	3,1	1526	<b>447</b>	342	<b>243</b>	149	1,198
	XOP060 B 01 IR 01 NNN	38	792	606	556	8,1	3,3	1646	<b>482</b>	369	<b>262</b>	161	1,197
	XOP075 B 01 IR 01 NNN	38	792	756	706	9,7	3,8	2006	<b>588</b>	450	<b>319</b>	197	1,195
1156 16 rails 3 espaces	XOM045 B 01 IR 01 NNN	38	1156	456	406	9,3	3,9	1731	<b>507</b>	390	<b>278</b>	172	1,180
	XOM050 B 01 IR 01 NNN	38	1156	506	456	10,1	4,2	1902	<b>558</b>	429	<b>305</b>	189	1,178
	XOM055 B 01 IR 01 NNN	38	1156	556	506	10,9	4,5	2073	<b>608</b>	467	<b>333</b>	207	1,177
	XOM060 B 01 IR 01 NNN	38	1156	606	556	11,7	4,8	2244	<b>658</b>	506	<b>361</b>	224	1,175
	XOM075 B 01 IR 01 NNN	38	1156	756	706	14,1	5,6	2756	<b>808</b>	622	<b>444</b>	276	1,170
1520 21 rails 4 espaces	XOL045 B 01 IR 01 NNN	38	1520	456	406	12,2	5,2	2230	<b>654</b>	498	<b>351</b>	215	1,214
	XOL050 B 01 IR 01 NNN	38	1520	506	456	13,3	5,5	2451	<b>718</b>	549	<b>388</b>	238	1,205
	XOL055 B 01 IR 01 NNN	38	1520	556	506	14,3	5,9	2672	<b>783</b>	600	<b>425</b>	262	1,195
	XOL060 B 01 IR 01 NNN	38	1520	606	556	15,4	6,3	2894	<b>848</b>	651	<b>463</b>	286	1,186
	XOL075 B 01 IR 01 NNN	38	1520	756	706	18,5	7,4	3558	<b>1043</b>	805	<b>577</b>	361	1,157
1744 25 rails 4 espaces	XOG045 B 01 IR 01 NNN	38	1744	456	406	14,4	6,1	2612	<b>766</b>	588	<b>418</b>	258	1,185
	XOG050 B 01 IR 01 NNN	38	1744	506	456	15,7	6,5	2863	<b>839</b>	644	<b>459</b>	284	1,182
	XOG055 B 01 IR 01 NNN	38	1744	556	506	16,9	6,9	3113	<b>912</b>	701	<b>500</b>	310	1,179
	XOG060 B 01 IR 01 NNN	38	1744	606	556	18,2	7,4	3364	<b>986</b>	758	<b>541</b>	336	1,176
	XOG075 B 01 IR 01 NNN	38	1744	756	706	21,9	8,7	4115	<b>1206</b>	930	<b>665</b>	414	1,167

Mix. Funct.	Code
400	ANRES400WDI
400	ANRES400WDI
400	ANRES400WDI
400	ANRES400WDI
400	ANRES400WDI
400	ANRES400WDI
400	ANRES400WDI
400	ANRES400WDI
700	ANRES700WDI
700	ANRES700WDI
700	ANRES700WDI
700	ANRES700WDI
700	ANRES700WDI
700	ANRES700WDI
1000	ANRES1000WDI
700	ANRES700WDI
700	ANRES700WDI
700	ANRES700WDI
1000	ANRES1000WDI
1000	ANRES1000WDI

Electric heater for Dual Power

BATHROOMS RADIATORS

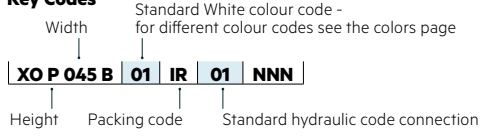
(\*) Thanks to the high performance of Irsap XILO radiators, the ideal Δt for low temperature projects is Δt at 30°C.

For Δt different from 50°C use the formula: Q=Qn (Δt / 50)<sup>n</sup>

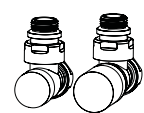
To order a radiator in the mixed version put the code of the Standard version + the code of the corresponding electric heater

Example: Mod. 1520 x 756: **XOL075 B 01 IR 01 NNN** (€ 349,21) + **ANRES1000WDI** (€ 197,29) = Tot. € 546,50

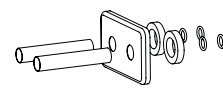
**Key Codes**



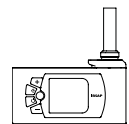
**Decorative & Technical Accessories**



Kit Valves and Lockshield valve  
Pag. 562



Pipe cover kit  
Pag. 566



Electronic Control  
Pag. 574

